

Service-Information Motorcycle



BMW NA
Service Department

Group: 18
Exhaust
System

March, 1988
18 004 88
(2299)

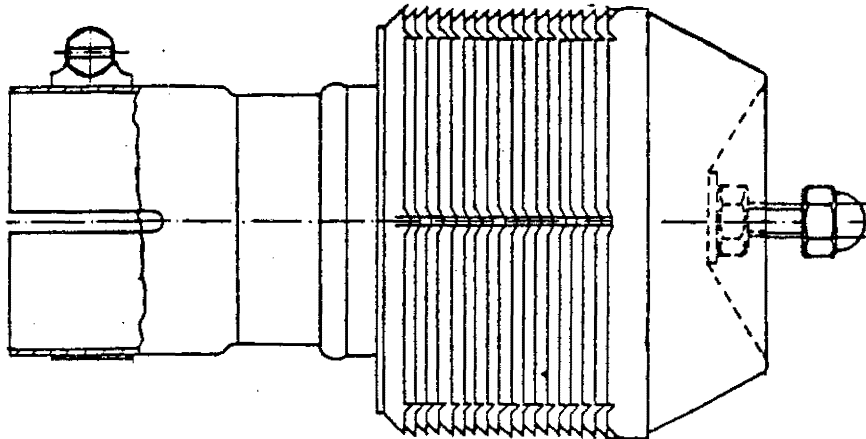
For USA Only

Spark Arrester - R80 G/S and R100GS

Information: Many states, as well as the U.S. Forest Service, require that an approved spark arrester be installed prior to off-road use.

Required Parts: A spark arrester is available as an accessory and can be ordered through normal parts channels:

Spark Arrester: 18 12 1 242 644
Clamp: 18 21 1 454 381



Additional Modifications: (R100GS only) The left rear turn signal unit **must** be removed for off-road use, as it is extremely close to the mounted spark arrester and melting of the rear turn signal may occur.

Very truly yours,

BMW OF NORTH AMERICA, INC.

Frank Stevens
National Service Manager

Richard Dampf
National Technical Manager

jel/608.2