

Service-Information



Group 21 Clutch	August 1981	Bulletin No. 21 002 81 (2037)
--------------------	----------------	----------------------------------

- For U.S.A. and Canada Only -

Subject: Fitting 1981 Clutch System On To
Pre-1981 Models.

Dear Dealer,

This new clutch system can be installed on all 5 speed gearbox models. (/6 & /7)

The only major obstacle you may encounter is the drilling and champhering of the clutch end of the crankshaft to accept the longer 1981 clutch rod if this essential modification is not evident. (as per enclosed drawing)

THE FOLLOWING PARTS ARE REQUIRED:

<u>QUANTITY</u>	<u>PART NUMBER</u>	<u>DESCRIPTION</u>
1	07 119 912 303	LOCK NUT
1	07 119 921 054	NUT
1	07 119 921 077	LOCK NUT
1	07 119 932 062	WASHER
1	07 119 984 020	BEARING
5	11 221 257 796	10mm BOLTS or
5	11 221 262 060	12mm BOLTS
1	11 221 335 366	SHIM
1	11 221 337 284	THRUST RING
1	21 211 242 353	DIAPHRAM SPRING
1	21 211 242 354	CLUTCH PLATE
1	21 211 242 355	CLUTCH PLATE
1	21 211 242 370	CLUTCH PLATE
6	21 211 242 371	BOLT
1	21 211 242 372	CLUTCH CASE
6	21 211 242 377	LOCK WASHERS

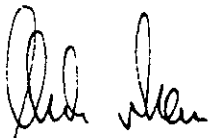
Please route and initial before filing

<u>QUANTITY</u>	<u>PART NUMBER</u>	<u>DESCRIPTION</u>
1	23 111 232 672	GASKET
1	23 111 241 831	TRANSMISSION COVER
1	23 121 232 679	SEAL
1	23 131 241 833	BUSHING
1	23 131 241 843	THRUST ROD
1	23 131 241 845	THRUST PIN
1	23 131 241 847	CLUTCH LEVER
1	23 131 241 848	ADJUSTER SCREW
1	23 131 241 849	SPRING
1	23 131 241 851	RUBBER BELLOWS
1	23 131 241 871	HOSE CLAMP
1	23 211 242 030	INPUT SHAFT

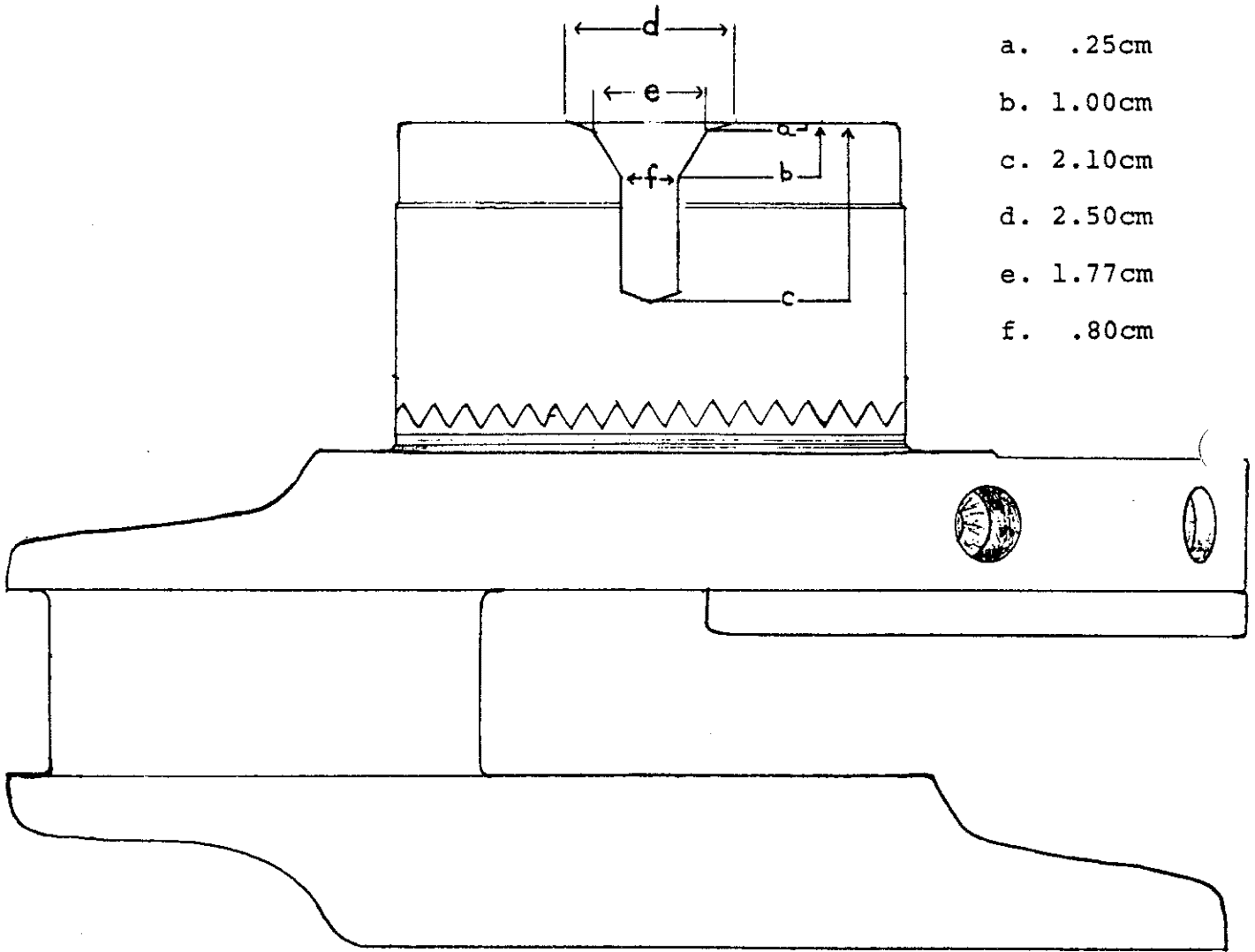
LABOR REQUIRED TO COMPLETE THIS CONVERSION:

<u>FLAT RATE NUMBER</u>	<u>DESCRIPTION</u>	<u>FR</u>
2 311 020	REMOVE & INSTALL GEAR BOX	24
2 311 541	RENEWING GEAR BOX COVER	13
2 312 541	RENEWING SEAL IN COVER	1
1 122 511	REMOVE & INSTALL FLYWHEEL (6 - R65)	8
- - - - -	DRILLING CRANKSHAFT (If Applicable)	10
- - - - -	RENEWING INPUT SHAFT	6
	TOTAL FR - R65's	60
	TOTAL FR - All But R65's	62

Yours truly,



Herb Neas
National Service Manager



- a. .25cm
- b. 1.00cm
- c. 2.10cm
- d. 2.50cm
- e. 1.77cm
- f. .80cm