

Service-Information



Group: 36 TIRES	January 1983	Bulletin No.: 36 018 83 (2067)
--------------------	-----------------	-----------------------------------

- For U.S.A. and Canada only -

RE: CONTINENTAL TIRES
TKC 60 AND 70 TWIN DURO FOR BMW R80G/S

Dear Dealer:

After completing successful testing, we are able to approve the Continental developed "Twin Duro" tire for the R80G/S.

Front: 3.00 S 21 TKC 60 with tube D21
Rear: 4.00 S 18 TKC 70 with tube F18

The recommended top speed of the S tire is 180 KM/H (111 m.p.h.).

We recommend, when exchanging tires, to install a new tube as well.

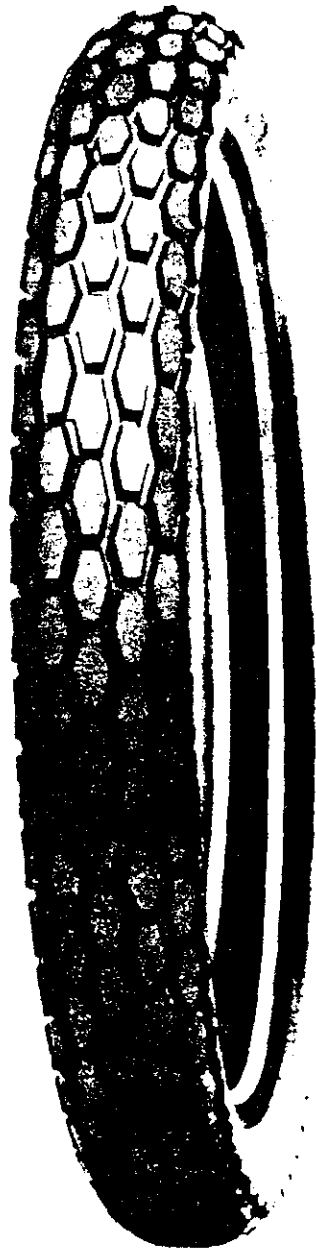
Yours truly,

BMW OF NORTH AMERICA, INC.

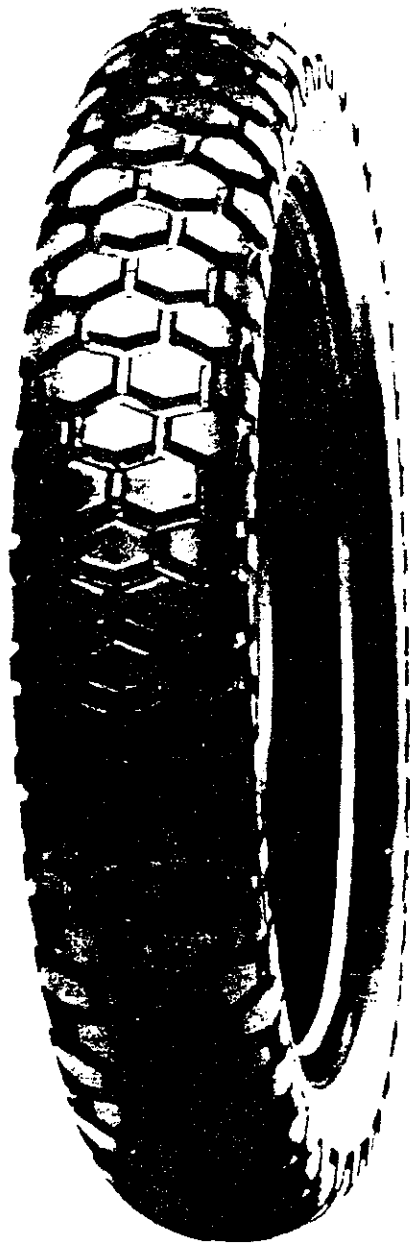
A handwritten signature in dark ink, appearing to read 'H. Neas', written over a faint circular stamp.

H. Neas
National Service Manager

HN/cs



TKC 60



TKC 70